

SI-3D System

Stereo 3D Camera System

*"The SI-3D camera system streamlines the entire stereo-3D content acquisition and post production process; **Combining two cameras into a single control, processing and recording platform enables shooting and instant playback like a traditional 2D camera** with the added tools needed on-set to analyze and adjust the lighting, color, flip orientation and stereo depth effects. In post, a unified stereo file plus associated metadata can be immediately graded for dailies, edited, and viewed in either 2D or 3D."*

Ari Presler, CEO of Silicon Imaging

SI-3D System Feature:

- ➔ 2K DCI & HD Raw Stereo Recording & Playback
- ➔ 3D Visualization (50/50, Side-by-Side, Anaglyph & Wiggle)
- ➔ Dual Outputs: Beam-Splitter LCD or Live Projection
- ➔ Virtual Parallax Adjustment: Flip, X-Y Shift and Rotation
- ➔ 12-Bit Uncompressed and CineformRAW Recording
- ➔ Single or Dual Drive independent Left/Right file
- ➔ Frame-Store: Grab/Save/Recall with 100%/50% Opacity
- ➔ Convergence Alignment Screen Guides (% of screen)
- ➔ Focus Tools: 4x Zoom, Edge Detect, Spot/Loupe Meter
- ➔ Exposure Tools: False-Color, Histograms & Spot Meter
- ➔ Ambient USB Timecode Interface
- ➔ Project & Metadata Management & AVID ALE Log File
- ➔ Auto File Sequencing - Scene/Shot/Take
- ➔ Iridas Speedgrade Embedded On-Set Grading
- ➔ Export Conversion: DNG, AVI, QuickTime MOV)
- ➔ Workflows - Avid, Apple Final-Cut, Adobe & Others
- ➔ Includes: 2xSI-2K Mini, Sync/Network Cables & Software



SI-2K MINI
SiliconImaging

SI-2K MINI
SiliconImaging

SI-3D System

Stereo 3D Camera System

Silicon Imaging, the company that enabled the digital shooting of the Oscar winning Best Picture Slumdog Millionaire, is now changing the face of stereo production. SI-3D is the world's first integrated 3D Cinema quality camera and stereo visualization system. It shoots uncompressed raw 2K or HD footage from two synchronized cameras, outputs dual video streams for independent Left/Right or Stereo Mixed displays and records directly to a single stereo QuickTime file along with 3D LUT color and convergence metadata. The 3D content can be instantly edited, without the need for proxy conversion or ingestion. SI-3D streamlines the entire stereo-3D content acquisition and post production workflow.

Integrated Capture, Control, Recording & 3D Display

The SI-3D system uses two remote head SI-2K Mini cameras with an P+S interchange lens mount connected to a single processing system via gigabit Ethernet where they are synchronized and controlled through the powerful and simple SiliconDVR touchscreen interface. On-set, each camera can be viewed individually or in 50/50, Side-by-Side, Anaglyph & Wiggle modes on standard 2D displays. It can also output mixed modes including: side-by-side, line-interlaced and Mesh for live 3D viewing and transmission.

11-Stops Dynamic range & POV Shooting

The SI-3D delivers film like image quality with 11-Stops of dynamic range, and 12-bit uncompressed raw directly to mobile 2.5" SSD (Solid State Drives), with peak rates up to 200Mbytes/sec. Each 250 GB drive can store up to 1-hour of footage from Left or Right. The camera's form factor and flexible lens mounting system enable use lightweight beam-splitter and parallel rigs to shoot steadicam, hand-held and helmet mounted.

Visualization Tools (Focus, Expose and Align)

Various tools are used to visualize and adjust the focus, lighting and 3-D effects including alignment grid overlays, false color zebras, digital zooming, edge detection, spot meters, dual histograms, parallax shifts, anaglyph mixing and wiggle displays. For shot continuity, an integrated Frame Store, enables the operator to grab an image from playback and realign cameras using 50% overlays. There is even a Built-In Green/Blue Screen Keyer.

Real-Time Editing, Color DI Grading & Workflow Integration

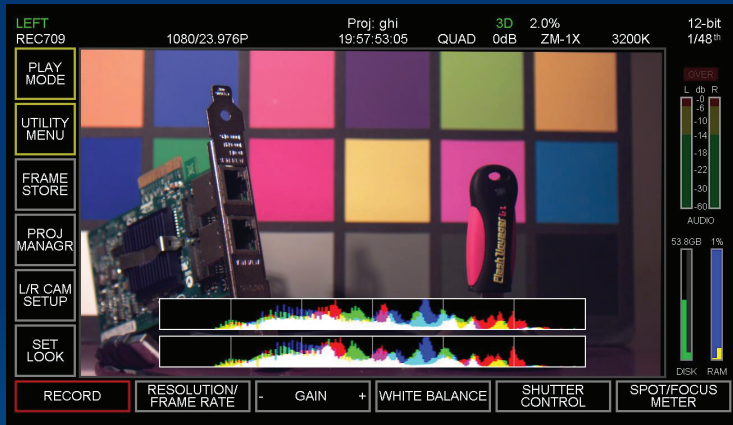
Unlike modern HD cameras, which develop and compress colorized imagery, the SI system captures raw "digital negatives" where they are non-destructively developed and colorized for preview using the desired "look" for the scene. These files can be edited directly in Apple Final Cut with CineForm's Neo-3D and post processed with Iridas FrameCycler and Speedgrade XR. These tools also enable conversion to Apple ProRes 422/444 and AVID DNxHD.



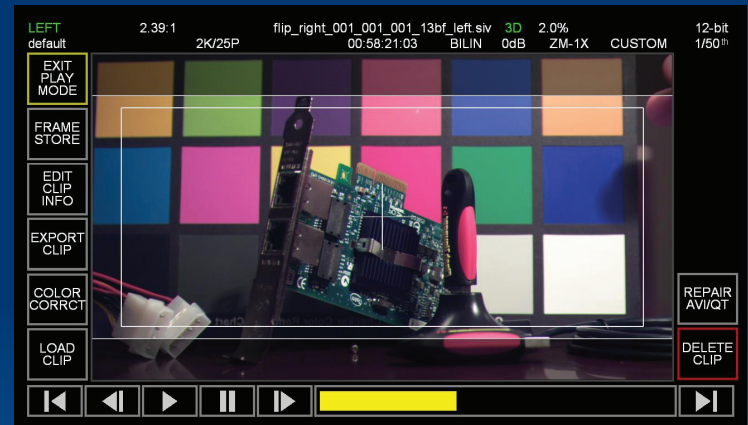
Pansy Music Video Production – Panavision Stageot

SI-3D System

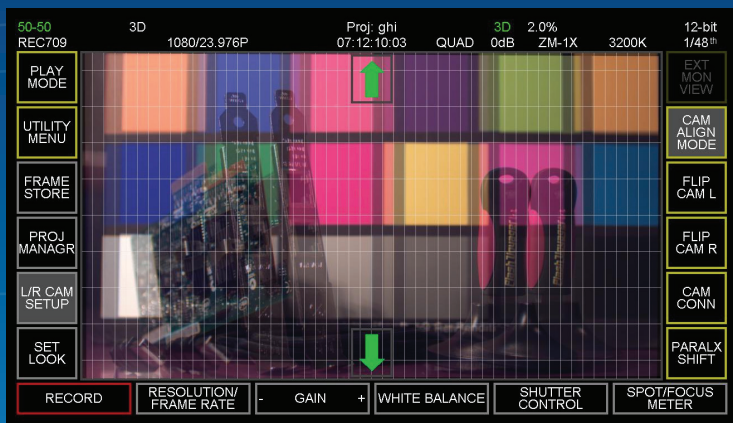
Stereo 3D Camera System



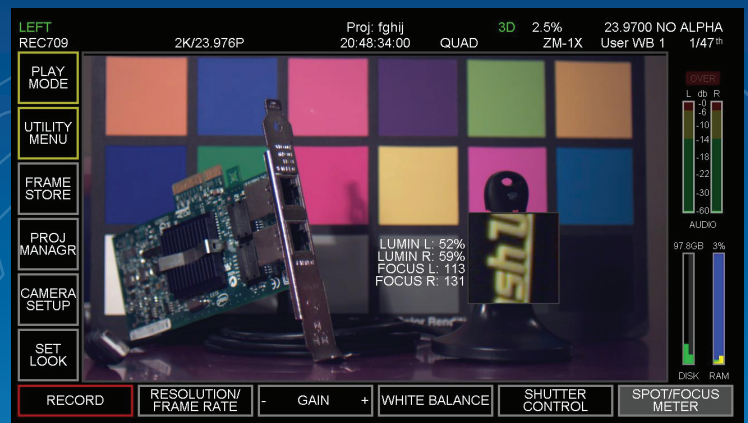
DUAL HISTOGRAM



3D STEREO PLAYBACK



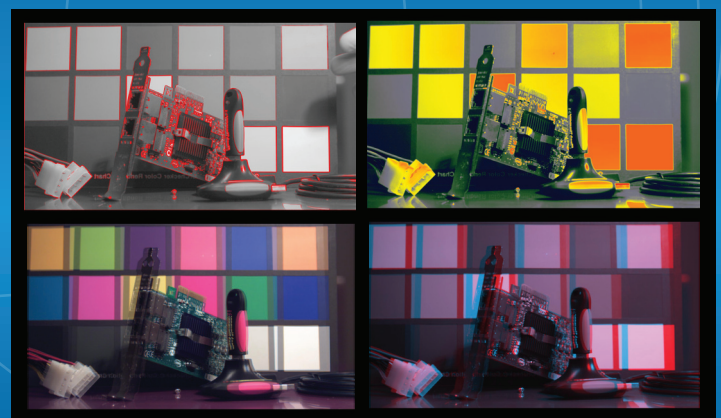
CAMERA ALIGNMENT GUIDES



SPOT & FOCUS METER



SPEEDGRADE EMBEDDED



VISUALIZATION (EDGE, EXPOSURE, 50-50, ANAGLYPH)

SI-3D System

Stereo 3D Camera System

"Driven by increasing numbers of 3D film projects planned by Hollywood studios, the demand for efficient 3D camera and post workflows has increased significantly in the last two years. The combination of the Silicon Imaging SI-3D camera with CineForm high-fidelity compressionbased 3D workflow will significantly reduce overall project complexity and costs."

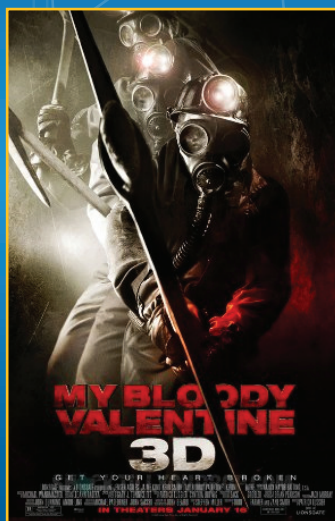
David Taylor, CEO of CineForm, Inc.



Stereographer Paul Taylor – 3D Camera Company Parallel Rig

"The Silicon Imaging camera's form factor and flexible lens mounting system enable us to develop innovative lightweight beam-splitter and parallel rigs to shoot steadicam and hand-held stereo footage with incredible latitude and film like results. We have the SI Mini's as part of our 3D camera package to shooting feature films including Thomas Jane's "Dark Country 3D", Patrick Lusier's, "My Bloody Valentine 3D" and Joe Dante's "The Hole 3D"."

Max Penner, CTO of ParadiseFX



SI-3D System on "My Bloody Valentine 3D" Shoot

SI-3D System

Stereo 3D Camera System



DIGITAL SLATE

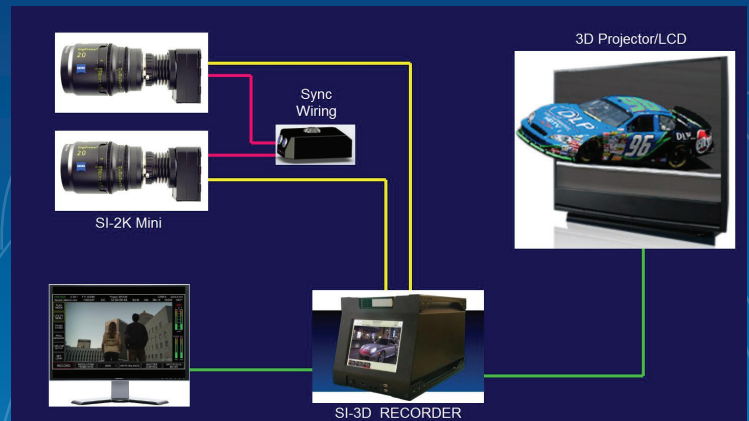
SI-3D System Components:

The SI-3D System consists of the following components

- ➔ 2x SI-2K Mini's with 3D Licenses
- ➔ 2x 10M Ethernet Cables (12P-to-RJ45)
- ➔ 1x Stereo-Sync Cable
- ➔ 1x SiliconDVR-3D Software
- ➔ 1x CineformRAW Stereo Encoder
- ➔ 1x Iridas Speedgrade Embedded Engine

SI-2K Mini Features:

- ➔ 11 F-Stops Film-Like Quality
- ➔ ISO 320 at 0dB (+12dB Max)
- ➔ S16 or 2/3" Optical format
- ➔ P+S Interchange Mount System: PL, B4, C & Nikon-F
- ➔ 2K(23.9/24/25), HD(25/29.9/30), 720P(85) for Slow Motion
- ➔ 100MB/sec Gigabit Ethernet Link with Intel Pro/1000
- ➔ Hardware Level Frame Synch (Master/Slave)
- ➔ LED Indicators: Power, Link, Record



SI-3D BLOCK DIAGRAM

Silicon Imaging, Inc.

Email HD@siliconimaging.com
Web www.siliconimaging.com

25 Covington Court
Niskayuna, NY 12309
USA
Tel +1-518-374-3367
Fax +1-518-374-3232

SI-2K MINI
SiliconImaging